

# **HAWAIIAN HANG GLIDING ASSOCIATION**

## **SITE RULES AND REGULATIONS**

### **GENERAL REGULATIONS**

All pilots must hold current USHPA membership.

All pilots must be current Hawaiian Hang Gliding Association members.

All visiting pilots must show proof of required USHPA or foreign equivalent ratings when required by site regulations.

All visiting pilots must be accompanied on at least their first flight at all sites. Thereafter specific site regulations must be followed.

All pertinent FAR's must be adhered to.

### **SPECIFIC SITE REGULATIONS:**

#### **Haleakala (Maui)**

Visiting pilots must be Advanced rated to fly this site and must be accompanied by an Advanced rated resident pilot. All pilot must have on file with the Haleakala Ranch; 1) Haleakala Ranch access waiver, 2) USHPA member waiver, 3) HHA member waiver.

The following regulations apply to resident pilots.

#### **Beginner**

May not fly this site.

#### **Novice**

May not fly this site.

#### **Intermediate**

Must obtain HHA approval before flying this site

All flights must be supervised by an Advanced rated sponsor.

May not fly when the dominant wind direction is less than 280° or greater than 350°.

May not fly when wind speed exceeds 15 mph.

#### **Advanced (recommendations)**

Should not fly when the dominant wind direction is less than 280° or greater than 350°.

Wind speeds in excess of 15 mph are an indication of unusual conditions and should be approached with caution.

# **HAWAIIAN HANG GLIDING ASSOCIATION**

## **HALEAKALA SITE GUIDE**

### **GENERAL FLIGHT CONDITIONS**

This is a unique site, lying on the vast slope of an enormous dormant volcano. Because of the size of the mountain it produces its own unique weather patterns. It can provide very good thermal flying as well as convergence (shearline) soaring. Since the flying area is on the western face of the mountain, it is generally well protected from the prevailing easterly tradewinds.

### **LAUNCH CONDITIONS & HAZARDS**

The launch area is relatively clear with a moderate grassy slope which gives plenty of running room. Since launch winds are usually light and because of the altitude, strong launching technique is a must. Being a thermal flying site, launch winds can be quite variable in direction with catabatic winds dominating the morning hours until heating of the lower elevations takes over and the thermals begin rolling up the slope. As with any thermal site, launching into an up cycle is recommended as the lulls can present no wind, cross winds, or even downslope winds.

Early afternoon can sometimes bring strong westerlies across the slope, blowing thermals away and making launching pointless if not hazardous.

When the tradewinds take a more northerly direction they can push in from the other direction, with similar results.

### **LANDING CONDITIONS & HAZARDS**

Normally thermal conditions dominate the LZ, leading to rapid changes in wind direction and speed. You should have no trouble getting there with plenty of enough altitude to carefully judge the conditions and set up a proper approach.

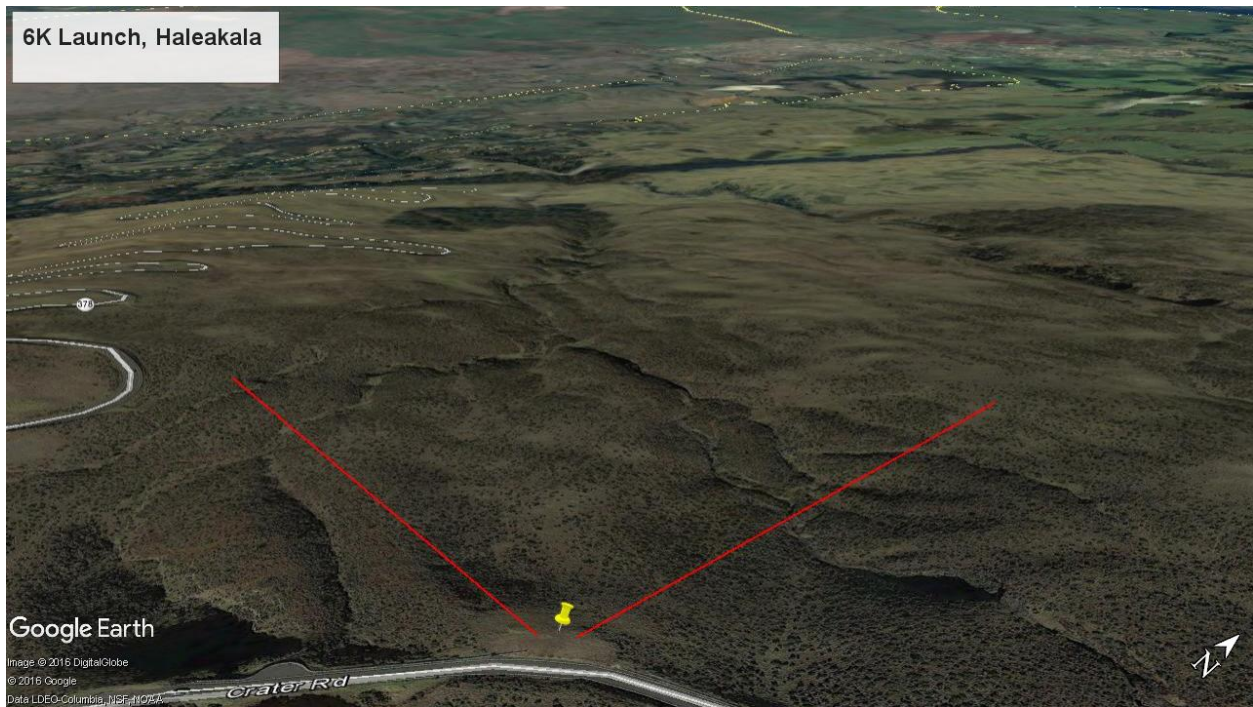
The LZ is a large pasture but it is not flat. For this reason it is very important to land *across* the slope even if it means performing a crosswind landing.

Contact info

Hang Gliding: David J Neto 808 280-2313 [neto@hawaii.rr.com](mailto:neto@hawaii.rr.com)

Para gliding: Rich Donovan 808 870-3930 [Donovanrich@aol.com](mailto:Donovanrich@aol.com)

20°45'18.41"N  
156°16'13.52"W



20°47'44.51"N  
156°18'31.85"W

